

ESG guidelines for agribusiness: Actions and opportunities in integration systems

DULCIMAR JULKOVSKI

UNIVERSIDADE DO OESTE DE SANTA CATARINA

SIMONE SEHNEM

Introdução

ESG guidelines are sets of good practices and standards that aim to demonstrate whether a company's drivers are engaged in social, environmental and governance, and they are increasingly important strategies for companies to provide contributions arising from the ESG developed in business (Clark, & Dixon, 2023). In Brazilian agribusiness, ESG strategies are evolving and are helping major players to establish strategies and legitimize best practices (Brazil, 2023).

Problema de Pesquisa e Objetivo

This research aims to investigate how ESG guidelines can contribute to governance in integration systems?

Fundamentação Teórica

Companies that adopt strategies and business models aligned with the best ESG practices will differentiate themselves in the market and will create the foundations for their growth and perpetuity, since the Brazilian agribusiness projections point to a growth of more than 20% by the year of 2030 (Brazil, 2023). To support projected growth, ESG guidelines in agribusiness mean including environmental, social and governance issues as drivers capable of making decisions more efficient and ethical (Archer, 2022).

Metodologia

This study is a Systematic Literature Review on ESG, governance, integration and agribusiness. The search strings "ESG" AND "Governance" AND "integration", "ESG" AND "agribusiness" and "ESG" AND "poultry" OR "pig*" OR "swine*" OR "chicken*" were used. The search was performed on July 27, 2023, using the Parsifal® software in the Scopus and Web of Science databases (Kitchenham, & Charters, 2007).

Análise dos Resultados

ESG guidelines such as guidelines for decision-making in a given area, process or activity establish guidelines for conduct, in addition to promoting uniformity that facilitates the management and control of processes. These directives cover 3 spheres: environmental, social and governance, and highlight a set of factors that guide companies in the path of applicability of the spheres to the context in which they are inserted.

Conclusão

We contribute to theory with 126 guidelines for ESG in agribusiness and to managerial practice with techniques and applications. We suggest future studies that address empirical evidence demonstrating ESG performance in different business models, as well as investigating how ESG impacts risk management to generate financial performance.

Referências Bibliográficas

Archer, M. (2023). Governing through ESG and the green spirit of asset manager capitalism. *Environment and Planning A: Economy and Space*. Doi: 0308518X231156611. Archer, M. (2022). The ethics of ESG: Sustainable finance and the emergence of the market as an ethical subject. *Focaal*, 2022(93), 18-31. Doi: 10.3167/fcl.2022.930102 Bhattacharya, A., & Bhattacharya, S. (2023). Integrating ESG Pillars for Business Model Innovation in the Biopharmaceutical Industry. *Australasian Accounting, Business and Finance Journal*, 17(1), 127-150. Doi: 10.14453/aabfj.v17i1.12

Palavras Chave

ESG, Agrobusiness, Integration System

ESG guidelines for agribusiness: Actions and opportunities in integration systems

Abstract

Brazil is one of the main players in global agribusiness and leads the production and export of agricultural commodities. Companies that adopt strategies and business models, aligned with ESG guidelines, will differentiate themselves and create security for the maintenance and growth of the business. This article investigates how ESG (Environmental Social and Governance) guidelines can contribute to integration systems in Brazilian agribusiness. The work is a systematic literature review using the Parsifal® Software which resulted in 126 analyzed articles. We contribute to theory with 126 guidelines for ESG in agribusiness and to managerial practice with techniques and applications. We suggest future studies that address empirical evidence demonstrating ESG performance in different business models, as well as investigating how ESG impacts risk management to generate financial performance.

Keywords: ESG. Agrobusiness. Integration System.

Introduction

ESG guidelines are sets of good practices and standards that aim to demonstrate whether a company's drivers are engaged in social, environmental and governance, and they are increasingly important strategies for companies to provide contributions arising from the ESG developed in business (Clark, & Dixon, 2023). In Brazilian agribusiness, ESG strategies are evolving and are helping major players to establish strategies and legitimize best practices (Brazil, 2023).

ESG strategies have evolved into a methodology for application in all business models and generate outstanding visibility for companies, evidencing the effort to promote sustainability and improve performance (Aldowaish, Kokuryo, Almazyad, & Goi, 2022). Adopting the ESG offers means to rewrite the terms of management and face the challenges of markets aggravated even more by Covid-19, as well as to promote the strengthening of the brand and to generate good references in the market and society (Atz, Van Holt, Liu, & Bruno, 2023).

Integrating ESG as an integration strategy in agribusiness improves investments, reduces economic, environmental and social asymmetries and provides potentially robust results to determine successful behavior (Madden, 2023). The integration of ESG into the planning and governance environment of companies' operations will improve decision-making and facilitate the transition to a high degree of generality in the legal solutions and structures adopted by companies (Komarnicka, & Komarnicki, 2022).

From the accelerated process of global urbanization, themes that permeate the ESG context in different realities, echo as strong aspects to be debated and studied with a view to promoting the ecological balance of the environment (Teixeira Dias, by Aguiar Dutra, Vieira Cubas, Ferreira Henckmaier, Courval, & de Andrade Guerra, 2023). According to the ESG guidelines, actions aimed at governance for environmental, economic and social commitment should be objectives of responsible companies, and integrating and improving these guidelines will boost performance and improve risk management (Jin, 2022).

It is essential that companies focus on relevant and strategic themes and that they respond to the growing demand to follow the guiding spheres to guide the ESG guidelines in the company's processes (Douglas, Van Holt, & Whelan, 2017). The sooner the company prepares to follow and implement, the greater its chances of success (Shea, & Hutchin, 2013). This research aims to investigate how ESG guidelines can contribute to governance in integration systems?

ESG in agribusiness

Companies that adopt strategies and business models aligned with the best ESG practices will differentiate themselves in the market and will create the foundations for their growth and perpetuity,

since the Brazilian agribusiness projections point to a growth of more than 20% by the year of 2030 (Brazil, 2023). To support projected growth, ESG guidelines in agribusiness mean including environmental, social and governance issues as drivers capable of making decisions more efficient and ethical (Archer, 2022).

The structure of agribusiness includes agents from different stages of the production process and agribusiness products and services cover different types of companies and individuals that circulate the activities of the production unit, from input suppliers to product distributors (Agripino, Maracajá, & de Araújo Machado, 2021). The scale of activities in the agribusiness value chain creates a favorable environment for the production of wealth, at the same time that it is a sector widely distributed and capillarized throughout the country (Brazil, 2023).

The integration of ESG criteria is considered a responsible and sustainable approach to business management because it is seen as a valuable argument, not because of some unique social, environmental or even financial benefits, but because it helps companies more effectively govern societies in which they invest (Archer, 2023). However, it is clear that the ESG guidelines point out ways for beneficial actions and are related to the environment in terms of climate change, use of renewable energy, greenhouse gas emissions, pollution, waste management, conservation of natural resources. In the social area, business ethics, management of relationships with stakeholders, diversity and inclusion, human rights, fair labor practices, health and safety at work are considered, and for corporate governance, it covers aspects such as transparency, provision of accounts, risk management, independence of boards of directors, executive compensation (Chouaibi, & Zouari, 2021).

Companies that are concerned with ESG tend to be more aware of their social and environmental impact, in addition to presenting better management and governance practices, thus mediating behavior in support of the introduction of ESG guidelines (Jun, & Kim, 2022). Brice, Cusworth, Lorimer and Garnett (2022) point out that ESG specificities permeate the entire universe of the company, from animals to the general performance of assets and liabilities, thus diversifying the company's policy of action to know, predict and concentrate efforts to reduce operational risks.

Decreasing the risks of operations implies a contemporary understanding of systems, because ESG integration creates connections and opens up new ways and directions for the company to analyze and make decisions, allowing it to act in integrative systems (Parfitt, 2020). Another key point that the ESG promotes in an integration system is the interrelationship of the guidelines, bringing to light the importance of adoption and also its commitment to the ethics and social aspects of the company, since to achieve better levels, it must be assuming a leadership position (Das, 2023).

Conducting work in agribusiness, as well as in other segments of the economy, constantly puts the company in the situation of defining paths to follow, that is, of making choices in the face of existing options and often non-routine decisions are needed that can impact significantly in the three spheres of ESG (Lee, Fan, & Wong, 2021). The importance of agribusiness, combined with the need to act ethically, presupposes a corporate culture of assertive and targeted strategic decisions in ESG, and for this reason, the need to invest strategically in governance is relevant and indispensable, since this finding is in line with the growth of this set of standards to which companies and producers can naturally adhere, allowing a robust integration system for stakeholders (Helfaya, Morris, & Aboud, 2023).

ESG as an integrative system

Thinking about ESG has become an ally of companies from different areas and is increasingly relevant to attract investors, increase business productivity and profitability, and thus positively impact the entire business (Baid, & Jayaraman, 2022). In Agribusiness it is no different, especially if we look at the challenges faced by the sector, such as the pressure to increase productivity to guarantee food security in the world, which shares space with the need to conserve natural resources and minimize negative environmental impacts (Cherkasova, & Nenuzhenko, 2022).

Thinking about ESG as a way to integrate systems for the sustainable development of agribusiness requires an integral approach, which considers not only productivity and profitability, but also the entire impact arising from its operations (Sciarelli, Cosimato, Landi, & Iandolo, 2021). The adoption of ESG practices in agribusiness, therefore, is fundamental and it is important to remember that they also bring benefits to all those involved, who can improve their reputation, attract investments, minimize challenges and foster technological innovation (Wu, Hu, Lyulyov, Pimonenko, & Hamid, 2022).

The challenges of Brazilian agribusiness organizations are with succession, growth, resources to make the strategic plan viable, entry of strategic partners, new global regulations such as ESG, sanitary regulations and traceability, capital for expanding investments, changing global consumer behavior, technological challenge and global competition (Brazil, 2023). A solid ESG posture to face challenges requires companies to demonstrate to their investors, consumers and partners a sincere intention to do good for the community and conduct their business with integrity, caring about ESG in full to seek the use of the best governance precepts (Medina, & Thomé, 2021).

ESG has been on the agribusiness agenda and has been strengthening business environments in a significant and robust way, with good references for shareholders and society, that the business plan is linked to a promising and sustainable perspective (Jesus, & Nascimento, 2021). In this sense, increasing the transparency of the implementation of practices is necessary to strengthen results and to ensure that process variables are identified, corrected and aligned in the implementation plan for good ESG performance and sustainable growth (Wang, & Jin, 2023).

In order to achieve sustainable development, the ESG promotes integration and creates understanding for the actors in the processes of the correct forms and operationalization of activities, giving meaning and integrated contribution to the social, environmental and governance structure (Favato, Neumann, Sanches, Branco, & Nogueira, 2021). This context justifies the surprising implementation of ESG guidelines to the strategic drivers that companies are working on and improving, with the purpose of establishing strong connections to resolve obstacles and aim for successful implementation (Norang, Støre-Valen, Kvale, & Temeljotov-Salaj, 2023).

Innovation in this area has seen the development of ESG measures and metrics for companies with the most different business models, and there is a widespread concern to evolve and intervene in systems by integrating ESG into all business processes and metrics (Clark, & Dixon, 2023). The results show that there is a significant relationship between the business and the results obtained and reveal that when the ESG component is integrated into the company, it promotes a positive impact on performance and minimizes environmental, social and governance gaps (Bullay, 2021).

Implementing ESG in the company can gain competitive advantage, it ensures that society and all stakeholders have access to the most timely ESG data about the company (Wang, & Jin, 2023). The implementation develops the integration and will demonstrate the actions that are being performed, and these actions will disclose the critical metrics that the business performs as well as the directions that the company promotes to the interested parties ((Das, 2023).

Methodology

This study is a Systematic Literature Review on ESG, governance, integration and agribusiness. The search strings “ESG” AND “Governance” AND “integration”, "ESG" AND "agribusiness" and "ESG" AND "poultry" OR "pig*" OR "swine*" OR "chicken*" were used. The search was performed on July 27, 2023, using the Parsifal® software in the Scopus and Web of Science databases (Kitchenham, & Charters, 2007). The files were imported from the Parsifal® Software in BibTeX format and totaled 371 articles. After excluding duplicates (229 articles) and rejected ones (16 articles), a total of 126 articles were analyzed in full. Figure 1 shows the execution of actions to carry out the work.

The general criteria of quality, inclusion and exclusion were applied during the construction process of the questions in the Parsifal® Software (Figure 1). In the PICOC plan (Population, Intervention, Comparison, Outcome, Context) the search strings “ESG” AND “Governance” AND

“integration”, "ESG" AND "agribusiness" and "ESG" AND "poultry" OR "pig*" OR "swine*" OR "chicken*" were included in the Population; Intervention the words agribusiness, poultry, pig, Chicken and integration; Comparison included systematic literature review; Outcome included article, review, research paper, tools, studies, methodologies, guidelines and indicators; Finishing with Context, including studies, agribusiness, integration system and production chain.

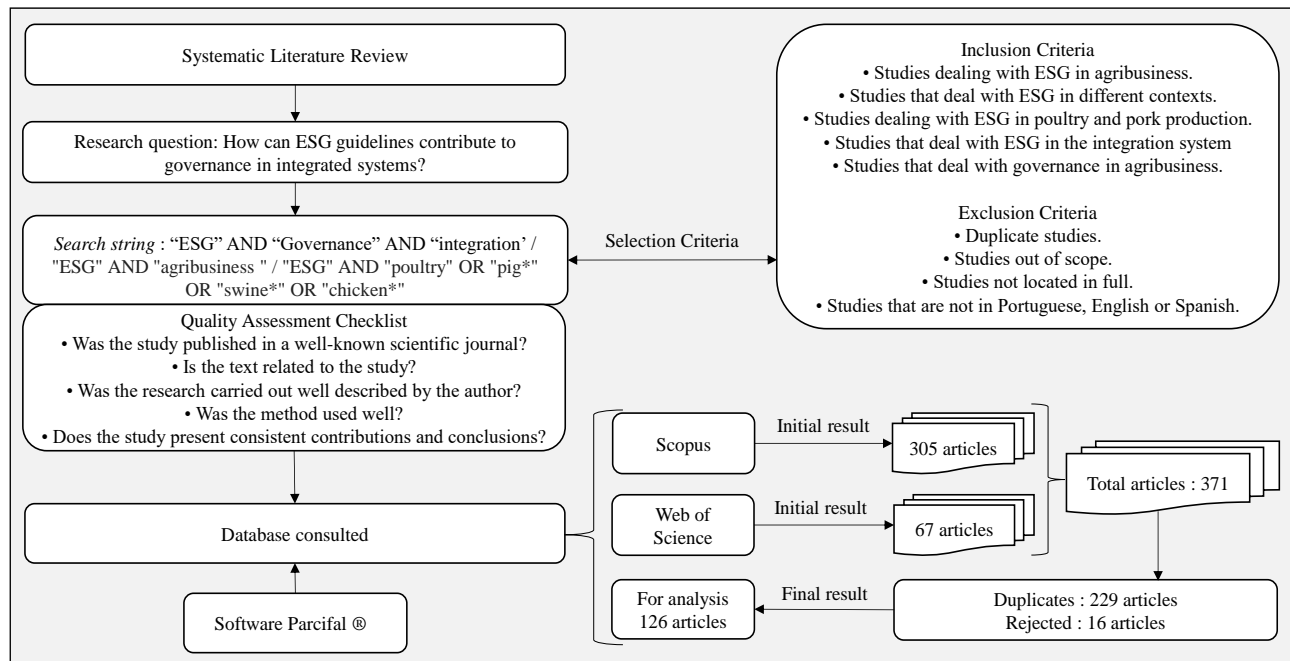


Figure 1 - Execution of actions

The main research question was how ESG guidelines can contribute to governance in integration systems and as supporting questions it was included: What ESG aspects of poultry and pork production influence the integration system? Does the integration system impact on producer satisfaction? Do ESG guidelines influence the integration system and do ESG guidelines impact producer satisfaction? The parameters for data extraction were the authors, year of publication, research challenges, country of origin, ESG variation and journals they published.

Data and dialogue

ESG guidelines such as guidelines for decision-making in a given area, process or activity establish guidelines for conduct, in addition to promoting uniformity that facilitates the management and control of processes. These directives cover 3 spheres: environmental, social and governance, and highlight a set of factors that guide companies in the path of applicability of the spheres to the context in which they are inserted.

ESG drivers comprise 3 spheres. In the environmental sphere factors on energy consumption, use of potable water, resilience to climate change, environmental policy, land use, management of natural resources, management of waste and hazardous materials. Within the scope of the social sphere, factors related to consumer rights, corporate philanthropy, data security and customer privacy, diversity issues, employee engagement, community health and safety, human rights, responsible people management, human capital management and for the sphere of governance with approaches in the accounting and consulting process, board composition, business ethics, compliance, executive compensation, corporate structure, transparency, governance of funds, political contributions, reports and disclosures, succession planning (Table 1).

Table 1

Sphere and Guidelines

Sphere	Guidelines
(1 ES) Environmental Sphere	<p>Innovation to significantly reduce greenhouse gas emissions (Madden, 2023); Consumption policies for sustainable production (Cubas, Ferreira Henckmaier, Courval, & de Andrade Guerra, 2023); Sustainability initiatives across the value chain (Das, 2023); Ability to proceed towards natural resource management (Cerciello, Busato, & Taddeo, 2023); Results dependent for a legitimization (Moreira, Smith, & Sharma, 2023); Efficient frontier for construction processes of sustainable management and consumption (Lima, 2023); Development as a new phase to improve the dissemination of information on greenhouse gas emissions and resource use (Lima, 2023); Strategies for renewable energy (Meng, & Shaikh, 2023); Implementation of environmental measures to increase sustainability (Zülch, 2023); Explore the relevance of ESG factors for a sustainable and innovative business model (Bhattacharya, & 2023); Opportunities and standards for responsible use (Ronalter, Poltronieri, & Gerolamo, 2023); Environmental concerns to influence (Sukumaran & Datta, 2023); Financial sustainability for environmental investments across multiple portfolios (Brice, 2023); (Shamsuddoha, & Woodside, 2022); Sustainability to improve financial performance (Aldowaihi, Kokuryo, Almazayad, & 2023); Improve integration and decrease deforestation (Brice, Cusworth, Lorimer, & Garnett, 2022); Level of integration to combine (Lima, 2023); Environmental policy (Dicuonzo, Donofrio, Iannuzzi, & Dell'Atti, 2022); Develop assets that represent environmental investments (Lima, 2023); Sustainable development with inter and transdisciplinary integration (Hofmann, 2022); Systematics of ecology aligned with (Lima, 2023); Finance (Bortnikov, & Lyubich, 2022); Balance level for efficient management of hazardous materials (Chen, Su, & Chen, 2023); Systems (Sahoo, & Kumar, 2022); Environmental Strategies for Revitalization and Modernization (Wu, Hu, Lyulyov, & 2023); Polluting results with the introduction of green management (Baker, Hollifield, & Osambela, 2022); Investment in sustainable (Lima, 2023); Resources (Edmans, & Kacperczyk, 2022); Efficient consumption for a growing consumer demand not to generate waste (Lima, 2023); Performance and publicize environmental activities and policies (Buallay, 2021); Integrated vision to generate sustainability (Nilavongse, 2021); Performance behavior for sustainable development (Vărzaru, Bocean, & Nicolescu, 2021); Develops products (Lima, 2023); and sustainability (Chen, & Mussalli, 2020); Innovation for sustainability in order to produce resilient results to global challenges (Lima, 2023); and resilient businesses for their impacts on the environment, climate and water (Alexander, 2020); Management as an environmental (Lima, 2023); Brito, Veloso, de Leite, Alves, da Hora Junior, & de Queiroz, 2020); Integration of environmental material priorities into the (Lima, 2023); (Espahbodi, Espahbodi, Juma, & Westbrook, 2019); Integration of the environment as a guiding principle in the processes by (Lima, 2023); aligning initiatives and interventions for sustainability (Whitelock, 2019); Management of environmental resources for performance (Lima, 2023); 2019); Engagement for sustainable development as a legitimation tool with stakeholders (Lokuwaduge, & Heenetigala, 2017); and (Lima, 2023); issues (Shea, & Hutchin, 2013).</p>
(2 SS) Social Sphere	<p>Sovereignty for different needs (Pascoal, Juwana, Karuniasa, & Djojokusumo, 2023); Social culture for disseminating and (Lima, 2023); Morris, & Aboud, 2023); Contribute to the relationship and engagement of the company's people and stakeholders (Almeida, 2023); contribute strongly in times of crisis (Atkins, Doni, Gasperini, Artuso, La Torre, & Sorrentino, 2023); Strategies to produce benefits (Lima, 2023); & Provasi, 2023); Responsibility for performance and safety in people (Uyar, Abdelqader, & Kuzey, 2023); Management of environmental (Lima, 2023); of social responsibilities (Kwon, & Shin, 2022); Importance of the board to improve corporate performance (Lin, Chang, & Hung, 2022); (Lima, 2023); Sigurjonsson, Johannsdottir, & Wendt, 2022); Philanthropy with social responsibility to reduce uncertainties in the long term (Lima, 2023); to carry out business ethics (Hassan, Chiaramonte, Dreassi, Paltrinieri, & Piserà, 2022); Social responsibility for funding in (Lima, 2023); response applied to investment to engage human development (Ashraf, Rizwan, & L'Huillier, 2022); Social responsibility and (Lima, 2023); (Cristea, Noja, Thalassinou, Cîrciumaru, Ponea, & Durău, 2022); ESG benefits to balance and maintain stakeholder engagement (Lima, 2023); 2022); Social focus to increase corporate and community performance (Ronalter, Bernardo, & Romani, 2022); Corporate (Lima, 2023); integration (Sorensen, Mussalli, Lancetti, & Belanger, 2022); Impact on company performance and organizational agility (Lima, 2023); 2022); Social governance to consolidate the ESG integrative potential (Lim, Ciasullo, Douglas, & Kumar, 2022); Positioning (Lima, 2023);</p>

(2 SS) Social Sphere	<p>legitimacy (Arif, Gan, & Nadeem, 2022); Cooperative competitiveness to improve social welfare (Tanaka, & Tanaka, 2022); relationship in the short term (Diaye, Ho, & Oueghlissi, 2022); Criteria for identifying corporate actions and integrating commitments to ESG and sit on boards (Burke, 2021); Ethical commitment to specialized management level (Chouaibi, & Zorion Jimenez, 2021); Increase the legitimacy of the company's stakeholders and impact people management (Garzon Jimenez, & Zorion Jimenez, 2021); Importance of engagement (Rehman, Abidin, Ali, Nor, Naseem, Hasan, & Ahmad, 2021); Legitimation of responsible activities (Zeile, & Zwergel, 2021); Drive to increase institutional accountability and engagement (Robinson, Parker, Carey, Foerster, & Foerster, 2021); The effectiveness of human management and learning (Raman, Bang, & Nourbakhsh, 2020); Relevant combination of rights (Raman, Bang, & Nourbakhsh, 2020); Investors with a social nature to face challenges and improve the safety of communities (Escrig-Olmedo, Rivera-Lirio, & Escrig-Olmedo, 2019); Integrate social processes to manage risk and improve transparency (Van Duuren, Plantinga, & Scholtens, 2016); ESG integration (Carriere, & Bleackley, 2015); Security and responsibility for long-term competitive advantage (Nielsen, & Noergaard, 2011)</p>
(3 GS) Governance Sphere	<p>Gradual evolution towards green investment instruments (Ramani, Henne, Kotsopoulos, Dickson, & Dickson, 2023); Legitimacy norms and guidelines (Beisenbina, Fabregat-Aibar, Barberà-Mariné, & Sorrosal-Forradellas, 2023); Corporate investment instruments (Bruno, 2023); Institutional characteristics such as the transparency process and influence on the disclosure structure (Sun, Xie, & Wang, 2023); and transparent changes contributing to planning (Moss, Naughton, & Wang, 2023); Capture of evidence and proposals for governance (Gu, Dai, & Vasarhelyi, 2023); Compliance in the implementation of ESG strategies to reduce risks (Galletta, & Galletta, 2023); Tool for decision-making on ESG joint factors (Gumerova, & Rizvanovab, 2023); Planning process (Norang, Støre-Valen, Kvale, & Temeljotov-Salaj, 2023); Good practices for transparency and integrated risk management (Wang, & Jin, 2023); Process to face challenges to the legitimacy of the sector globally (Zumente, Bistrova, & Lāce, 2022); Risk management for investments for integrated management (Harymawan, Nasih, Agustia, Putra, & Djajadikerta, 2022); Investment in incentives (Botes, Davey, Esposito, & Smit, 2022); Information technology for integration and immersion of technical skills (Botes, Davey, Esposito, & Smit, 2022); Recognition of ESG strategy (Jim, & Kim, 2022); Corporate financial performance driven by transparency (Cherubini, 2022); Performance is conditioned by the level of resources and accounting process (Ivascu, Domil, Sarfraz, Bogdan, Burca, & Paunescu, 2022); ESG to highlight distinct values of transparency (Pishchalkina, Pishchalkin, & Suloeva, 2022); Business integration in providing transparency (Behl, Kumari, Makhija, & Sharma, 2022); Investment with planning to promote returns (Carroux, Busch, & Carroux, 2021); Negotiations and inclusion of costs and management fees as a risk strategy (Lee, Fan, & Wong, 2021); Complete ESG integration (Cosimato, Landi, & Iandolo, 2021); Examine the level of inclusion of investments in initiatives to integrate ESG criteria (Amin, & Kim, 2021); Responsible and transparent investment (Väänänen, 2021); Structural process for synergy between all process factors (Favato, Neumann, Sanches, Branco, & Nogueira, 2021); minimize gaps (Blitz, & Swinkels, 2021); Contributions to the transformation of governance (Medina, & Thomé, 2021); Guidelines and disclosures (Arif, Sajjad, Farooq, Abrar, & Joyo, 2021); Integration of governance for a degree of compliance (Arif, Sajjad, Farooq, Abrar, & Joyo, 2021); Governance to improve performance and boost ESG (Fan, & Michalski, 2020); Strategies for investments and decision-making (Zaccone, & Pedrini, 2020); Impact of integration to rebalance of risks and strategies applied (Zaccone, & Pedrini, 2020); ESG performance as a high and long-term corporate strategy (Chevrollier, Zhang, van Leeuwen, & Nijhof, 2020); Mitigation of reputational risks and, in particular, governance issues (Fritz, & von Schnurbein, 2019); Data quality for assertive investment (Giese, Lee, Melas, Nagy, & Nishikawa, 2019); Businesses focused on performance (Giese, Lee, Melas, Nagy, & Nishikawa, 2019); Institutional investment to contribute to integration and transparency (Moikwatthai, Yasseen, & Yasseen, 2019); Improve disclosures and transparency (In, Rook, & Monk, 2019); Planning and adjustments that encourage and promote responsible investment (Amel-Zadeh, & Serafeim, 2018); Full integration and engagement to drive investments (Amel-Zadeh, & Serafeim, 2018); Investment strategies embedded in governance (Bender, Bridges, He, Lester, & Sun, 2018); Integration to drive economic performance ((Maniora, 2017; Syed, 2017); Investment strategies (Schramade, 2016); Produce better economic results with strategies aligned with governance (Peiro, Segarra, Mondragón, & Segarra, 2016)</p>

The importance of guiding, showing the direction or path to follow, is fundamentally relevant in the context of sphere applications, since it will establish foundations and paths for companies' management to improve. All guidelines contribute, promote, improve, leverage and make the company more attractive to stakeholders, as well as identify strategic opportunities and promote increased resilience in the face of socioeconomic and environmental challenges (Table 1). The contribution is to build a stronger corporate brand with the potential to gain market value and pave the way for sustainable development. The promotion generates stricter standards of control and compliance and collaborates with the improvement in the sense of providing satisfaction to stakeholders and strengthening alignment with society, as it boosts revenue growth and enables cost reduction through the management of natural resources.

The results show that ESG grew from 2019 onwards and authors such as Jesus e Nascimento (2021) and Atz, Van Holt, Liu, and Bruno (2023), point out that the new management to face the challenges of the market involves adoption of ESG in the structure of the company (Figure 2). The spheres of the ESG collaborate towards sustainable development, which considers healthy business management with an active focus on social matters and governance as purposes.

Sphere	Year	Note of guidelines			Total	Publication year		
		1 ES	2 SS	3 GS		Number		
	2023	12	6	13	1 ES = 38	31	2023	
	2022	13	17	11		2 SS = 35	41	2022
	2021	4	5	10			19	2021
	2020	4	2	5	3 GS = 53	11	2020	
	2019	3	1	7		11	2019	
	2018	-	-	3	126	3	2018	
	2017	1	1	2		4	2017	
	2016	-	1	1		2	2016	
	2015	-	1	-		1	2015	
	2014	-	-	-		-	2014	
	2013	1	-	1		2	2013	
	2012	-	-	-		-	2012	
	2011	-	1	-		1	2011	

Figure 2. Number of notes per sphere and number of publications per year

Also, authors such as Clark and Dixox (2023) and Helfaya, Morris and Aboud (2023) point out that the growth of the ESG can raise the level of the company's internal policies and that it will automatically impact the interested parties (Figure 2). The impacts pointed out mean that the company builds a holistic view of the ESG, to understand the guidelines and ways to implement and monitor the results.

Pointing to agribusiness important techniques that can be implemented directly or gradually, depending on the structural and management level at which the company is located (Figure 3). The adoption of ESG practices establishes joint factors and functions to directly or gradually prepare the company's departments, areas, structures to implement the environmental, social and governance aspects as integrated tasks in the routine. A redesign of activities to allow integration may be necessary, as well as strategies for training people, setting goals, monitoring and disseminating results.

The work of all those involved will improve the results and generate credibility of the data obtained, as well as allow measuring the results and taking new measures to redirect the practices according to the objectives and goals. The taxonomy of the ESG guidelines deserves to be thought through and redesigned for practical use, not just for specific sectors of the company, but for the entire structure of the company.

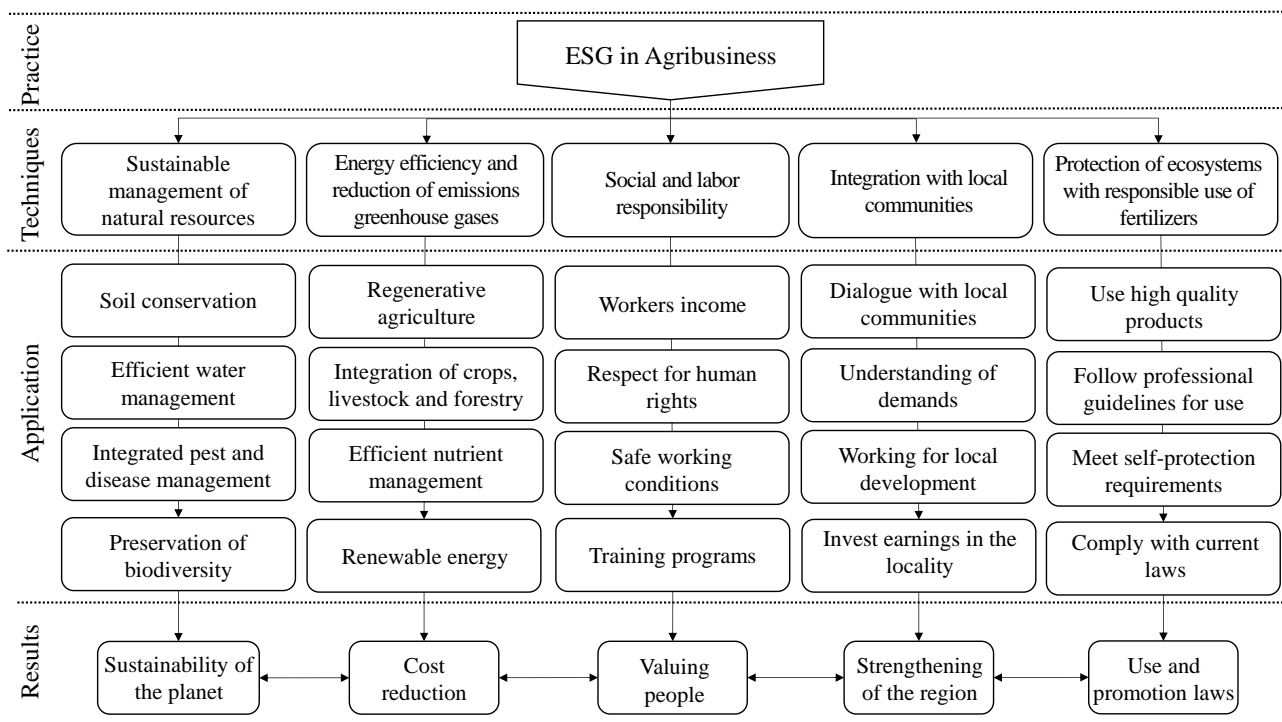


Figure 3. ESG practice in agribusiness

Sustainable management of natural resources is the responsible use of natural resources, which is one of the most important techniques of ESG practices in agribusiness, because they are finite and population growth forecasts remain very high (Figure 3). This application involves the implementation of agricultural techniques that reduce the environmental impact, such as the use of soil conservation methods, the efficient management of water use, the integrated management of pests and diseases and the preservation of biodiversity to generate sustainability for the planet. Brice, Cusworth, Lorimer, and Garnett, (2022), mention that sustainable management actions collaborate for a more comprehensive and robust sustainability to become lasting.

The technique of energy efficiency and reduction of greenhouse gas emissions, the search for energy efficiency in parallel with the reduction of greenhouse gas emissions, is another very important factor of ESG in agribusiness (Figure 3). The technique can be implemented through the adoption of practices that reduce greenhouse gas emissions, for example practices related to regenerative agriculture, such as direct planting, conservation practices, crop rotation, integrated crop and livestock systems and crop integration, livestock and forestry, efficient management of nutrients and fertilizers with a low carbon footprint, integrated pest and disease management, use of more efficient types of irrigation. According to Gu, Dai, & Vasarhelyi, (2023) the use of innovative and practical technologies that reduce energy consumption or the use of renewable energies in agricultural operations are also important for increasing energy efficiency and reducing greenhouse gas emissions. greenhouse effect as well as cost reduction.

Social and labor responsibility as a technique, although the sustainability agenda is much more related to the protection of the environment, the letters “S” and “G” of the acronym must not be forgotten and the practices must also focus on the social aspect of agribusiness with the same importance (Figure 3). Valuing workers and respecting human rights are fundamental and these, in turn, involve compliance with labor standards, combating child labor and slavery, guaranteeing safe working conditions and implementing training programs and development, which results in valuing people, and Archer (2022) mentions that it is the act of seeing people as ethical subjects and human beings.

The technique of integrating with local communities generates respect and engagement in communities, and this is very important (Figure 3). This implies establishing dialogues to listen to demands and this directly contributes to local development, since resources are applied in the

surroundings and thereby strengthening the region. Das (2023) comments that initiatives of this magnitude achieve better levels of sustainable performance.

In the technique of protecting ecosystems and responsible use of fertilizers, it is understood that they are indispensable, therefore, their responsible administration is essential to guarantee food security (Figure 3). For this to be done in accordance with the ESG, it is important to think about the role of fertilization in the environmental, social and economic sustainability of activities. It is necessary to use only efficient and high quality products that cause the least possible impact on nature. With this, complying with current laws makes the technique more collaborative for the promotion of laws and Gebhardt, Thun, Seefloth, & Zülch (2023), point out that the efficient performance of the ESG establishes a joint quality relationship at all times to seek better and lasting results.

Although techniques and applications are indicated vertically, both techniques and applications can be used together and according to the company's reality, aiming at interrelated global results. It is relevant for company management to fit ESG into investments and according to Uyar, Abdelqader, & Kuzey (2023), companies that adopt social and environmental responsibility practices demonstrate that they care about the environment and the society in which they are inserted, and this is a posture valued by customers, investors and employees, who tend to choose companies that have this type of commitment.

A second relevant factor is about risk reduction and value creation, because companies that adopt sustainable practices tend to have less environmental, social and governance risks, which can be translated into less exposure to fines, lawsuits, loss of customers and damage to reputation. Risk management as a set of coordinated activities that aim to manage and control the organization in relation to potential threats, promote ESG to better levels and automatically improve value generation (Galletta, & Mazzù, 2023).

As a third relevant factor, access to capital is pointed out, where investors have shown themselves to be increasingly interested in companies that adopt sustainable practices, which can result in greater access to capital and better financing conditions. According to Dong, Shao, Xin, & Lu (2023), a company that has sustainable performance is perceived by financial institutions as conducive to accessing financing.

Meng, & Shaikh (2023) say that it is strategic for companies to adopt green finance with the inclusion of ESG in investment decision processes. As a fourth relevant factor and pointed out as a global trend, is the application of ESG in all business models, where ESG generates recognition, adds best practices and promotes synergy in business actions to obtain better results in all processes, helping in the pursuit of environmental, social and governance sustainability.

Conclusions

This article investigated how ESG guidelines can contribute to integration systems in Brazilian agribusiness. Through a systematic literature review using the Parsifal® Software, we examined the Web of Science and Scopus databases, obtaining 371 articles, which after initial analysis, duplicates and rejections were removed and we obtained 126 published articles that were read and analyzed in full.

Brazilian agribusiness is considered a world reference and the ESG guidelines are also on the radar of companies, in all business models. ESG is an opportunity for companies to differentiate themselves in business, improve risk management and access investments. The guidelines that the ESG advocates, highlight the importance of guiding, showing the direction or path to follow, are of fundamental importance in the context of applications in the environmental, social and governance spheres, since they establish foundations and paths for the management of companies, and these spheres promote resilience in the face of socioeconomic and environmental challenges.

ESG guidelines as guidelines for decision-making in a given area, process or activity establish conduct guidelines that cover 3 spheres, the environmental, social and governance. We cite 126 guidelines pointed out by the authors of the systematic literature review, where 38 were in the environmental sphere, 35 in the social sphere and 53 in the sphere of governance. All guidelines

contribute to promoting and leveraging strategies to increase the resilience of companies and build a stronger brand with market value gains. The results show that ESG has been growing since 2019 and emphasizes that it is important to manage and face market challenges.

We point to important techniques for agribusiness that can be implemented directly or gradually, depending on the structural and management level at which the company is. Adopting ESG practices allows credible integration and deserves to be thought and redesigned according to the reality of each company. ESG practices in agribusiness for sustainable management of natural resources, energy efficiency and reduction of greenhouse gas emissions, social and labor responsibility, integration with local communities and protection of ecosystems and responsible use of fertilizers, establish application methods for obtaining robust results.

Although techniques and applications are indicated vertically, both techniques and applications can be used together and in accordance with the company's reality, and it becomes relevant to fit ESG into investments. A second relevant factor is about risk reduction and value creation that ESG develops. As a third relevant factor, access to capital is pointed out, where investors have shown themselves to be increasingly interested in companies that adopt sustainable practices, as well as improving access to financing, and as a fourth relevant factor, ESG is a worldwide trend for all models to assist in the pursuit of environmental, social and governance sustainability.

We contribute to theory with 126 guidelines for ESG in agribusiness and to managerial practice with techniques and applications aiming at comprehensive and robust results. We suggest future studies that address empirical evidence demonstrating ESG (environmental, social and governance) performance in different business models, as well as investigating how ESG impacts risk management to generate financial performance.

References

- Agripino, N. E., Maracajá, K. F. B., & de Araújo Machado, P. (2021). Corporate Sustainability in Agribusiness: Routes and Implications in Brazilian Practices. *Research, Society and Development*, 10(7). Doi: 10.33448/rsd-v10i7.16567
- Alda, M. (2021). The environmental, social, and governance (ESG) dimension of firms in which social responsible investment (SRI) and conventional pension funds invest: The mainstream SRI and the ESG inclusion. *Journal of Cleaner Production*, 298, 126812. Doi: 10.1016/j.jclepro.2021.126812
- Aldowais, A., Kokuryo, J., Almazyad, O., & Goi, H. C. (2022). Environmental, social, and governance integration into the business model: Literature review and research agenda. *Sustainability*, 14(5), 2959. Doi: 10.3390/su14052959
- Alexander, F. (2020). An honorable harvest: universal owners must take responsibility for their portfolios. *Journal of Applied Corporate Finance*, 32(2), 24-30. Doi: 10.1111/jacf.12402
- Almici, A. (2023). Does sustainability in executive remuneration matter? The moderating effect of Italian firms' corporate governance characteristics. *Meditari Accountancy Research*, 31(7), 49-87. Doi: 10.1108/MEDAR-05-2022-1694
- Aluchna, M., & Roszkowska-Menkes, M. (2019). Integrating corporate social responsibility and corporate governance at the company level. Towards a conceptual model. *Engineering Economics*, 30(3), 349-361. Doi: 10.5755/j01.ee.30.3.17511
- Amel-Zadeh, A., & Serafeim, G. (2018). Why and how investors use ESG information: Evidence from a global survey. *Financial analysts journal*, 74(3), 87-103. Doi: 10.2469/faj.v74.n3.2
- Araujo, K. S., Brito, V. N., Veloso, T. G., de Leite, T. S., Alves, J. L., da Hora Junior, B. T., ... & de Queiroz, M. V. (2020). Diversity and distribution of endophytic fungi in different tissues of *Hevea brasiliensis* native to the Brazilian Amazon forest. *Mycological Progress*, 19, 1057-1068. Doi: 10.1007/s11557-020-01613-4
- Arif, M., Gan, C., & Nadeem, M. (2022). Regulating non-financial reporting: evidence from European firms' environmental, social and governance disclosures and earnings risk. *Meditari Accountancy Research*, 30(3), 495-523. Doi: 10.1108/MEDAR-11-2020-1086
- Arif, M., Sajjad, A., Farooq, S., Abrar, M., & Joyo, A. S. (2021). The impact of audit committee attributes on the quality and quantity of environmental, social and governance (ESG) disclosures. *Corporate Governance: The International Journal of Business in Society*, 21(3), 497-514. Doi: 10.1108/CG-06-2020-0243
- Archer, M. (2023). Governing through ESG and the green spirit of asset manager capitalism. *Environment and Planning A: Economy and Space*. Doi: 0308518X231156611.
- Archer, M. (2022). The ethics of ESG: Sustainable finance and the emergence of the market as an ethical subject. *Focaal*, 2022(93), 18-31. Doi: 10.3167/fcl.2022.930102
- Ashraf, D., Rizwan, M. S., & L'Huillier, B. (2022). Environmental, social, and governance integration: The case of microfinance institutions. *Accounting & Finance*, 62(1), 837-891. Doi: 10.1111/acfi.12812

- Atkins, J., Doni, F., Gasperini, A., Artuso, S., La Torre, I., & Sorrentino, L. (2023). Exploring the effectiveness of sustainability measurement: which ESG metrics will survive COVID-19?. *Journal of Business Ethics*, 185(3), 629-646. Doi: 10.1007/s10551-022-05183-1
- Atz, U., Van Holt, T., Liu, Z. Z., & Bruno, C. C. (2023). Does sustainability generate better financial performance? review, meta-analysis, and propositions. *Journal of Sustainable Finance & Investment*, 13(1), 802-825. Doi: 10.1080/20430795.2022.2106934
- Baid, V., & Jayaraman, V. (2022). Amplifying and promoting the “S” in ESG investing: the case for social responsibility in supply chain financing. *Managerial Finance*, 48(8), 1279-1297. Doi: 10.1108/MF-12-2021-0588
- Bauckloh, T., Schaltegger, S., Utz, S., Zeile, S., & Zwergel, B. (2021). Active first movers vs. late free-riders? an empirical analysis of un pri signatories’ commitment. *Journal of business ethics*, 1-35. Doi: 10.1007/s10551-021-04992-0
- Behl, A., Kumari, P. R., Makhija, H., & Sharma, D. (2022). Exploring the relationship of ESG score and firm value using cross-lagged panel analyses: Case of the Indian energy sector. *Annals of Operations Research*, 313(1), 231-256. Doi: 10.1007/s10479-021-04189-8
- Baker, D. S., Hollifield, B., & Osambela, E. (2022). Asset prices and portfolios with externalities. *Review of Finance*, 26(6), 1433-1468. Doi: 10.1093/rof/rfac065
- Beisenbina, M., Fabregat-Aibar, L., Barberà-Mariné, M. G., & Sorrosal-Forraddellas, M. T. (2023). The burgeoning field of sustainable investment: Past, present and future. *Sustainable Development*, 31(2), 649-667. Doi: 10.1002/sd.2422
- Bender, J., Bridges, T. A., He, C., Lester, A., & Sun, X. (2018). A blueprint for integrating ESG into equity portfolios. *The Journal of Investment Management*, 16(1). ISSN 1545-9144
- Bhattacharya, A., & Bhattacharya, S. (2023). Integrating ESG Pillars for Business Model Innovation in the Biopharmaceutical Industry. *Australasian Accounting, Business and Finance Journal*, 17(1), 127-150. Doi: 10.14453/aabf.v17i1.12
- Blitz, D., & Swinkels, L. (2021). Does excluding sin stocks cost performance? *Journal of Sustainable Finance & Investment*, 1-18. Doi: 10.1080/20430795.2021.1972789
- Botes, V., Davey, H., Esposito, D., & Smit, B. R. (2022). How accountants responded to the financial fallout owing to the COVID-19 pandemic. *Pacific Accounting Review*, 35(1), 66-85. Doi: 10.1108/PAR-09-2020-0177
- Bortnikov, G., & Lyubich, O. (2022). ESG RISK MANAGEMENT IN UKRAINIAN BANKS. *Financial & Credit Activity: Problems of Theory & Practice*, 6(47). Doi: 10.1002/csr.2361
- Brazil, Ministry of Agriculture, Livestock and Supply. (2023). Brazil Agribusiness Forecasts 2022/2023 a 2032/2033 - Portuguese (Brasília, 2023 - Brazil). Available in: <https://www.gov.br/agricultura/pt-br/assuntos/politica-agricola/todaspublicacoes-de-politica-agricola/projecoes-do-agronegocio>. Acesso em: 15 agosto de 2023.
- Brice, J., Cusworth, G., Lorimer, J., & Garnett, T. (2022). Immaterial animals and financialized forests: Asset manager capitalism, ESG integration and the politics of livestock. *Environment and Planning A: Economy and Space*, 54(8), 1551-1568. Doi: 10.1177/0308518X221121132
- Buallay, A. (2021). Sustainability reporting and agriculture industries’ performance: worldwide evidence. *Journal of Agribusiness in Developing and Emerging Economies*, 12(5), 769-790. Doi: 10.1108/JADEE-10-2020-0247
- Burke, J. J. (2021). Do boards take environmental, social, and governance issues seriously? Evidence from Media Coverage and CEO Dismissals. *Journal of Business Ethics*, 1-25. Doi: 10.1007/s10551-020-04715-x
- Carroux, S. L., Busch, T., & Paetzold, F. (2022). Unlocking the black box of private impact investors. *Qualitative Research in Financial Markets*, 14(1), 149-168. Doi: 10.1108/QRFM-04-2020-0071
- Cerciello, M., Busato, F., & Taddeo, S. (2023). The effect of sustainable business practices on profitability. Accounting for strategic disclosure. *Corporate Social Responsibility and Environmental Management*, 30(2), 802-819. Doi: 10.1002/csr.2389
- Chen, C. D., Su, C. H. J., & Chen, M. H. (2022). Understanding how ESG-focused airlines reduce the impact of the COVID-19 pandemic on stock returns. *Journal of Air Transport Management*, 102, 102229. Doi: 10.1016/j.jairtraman.2022.102229
- Chen, M., & Mussalli, G. (2020). An integrated approach to quantitative ESG investing. *The Journal of Portfolio Management*, 46(3), 65-74. Doi: 10.3905/jpm.2020.46.3.065
- Cherkasova, V., & Nenuzhenko, I. (2022). Investment in ESG projects and corporate performance of multinational companies. *Journal of Economic Integration*, 37(1), 54-92. Doi: 10.11130/jei.2022.37.1.54
- Chevrollier, N., Zhang, J., van Leeuwen, T., & Nijhof, A. (2020). The predictive value of strategic orientation for ESG performance over time. *Corporate Governance: The International Journal of Business in Society*, 20(1), 123-142. Doi: 10.1108/CG-03-2019-0105
- Cho, H. J., Lehner, O. M., & Nilavongse, R. (2021). Combining financial and ecological sustainability in bank capital regulations. *Journal of Applied Accounting Research*, 22(3), 423-435. Doi: 10.1108/JAAR-10-2020-0221
- Chouaibi, Y., & Zouari, G. (2021). The effect of corporate social responsibility practices on real earnings management: evidence from a European ESG data. *International Journal of Disclosure and Governance*, 1-20. Doi: 10.1057/s41310-021-00125-1
- Clark, G. L., & Dixon, A. D. (2023). Legitimacy and the extraordinary growth of ESG measures and metrics in the global investment management industry. *Environment and Planning A: Economy and Space*. Doi: 0308518X231155484.

- Cristea, M., Noja, G. G., Thalassinou, E., Cîrciumaru, D., Ponea, C. Ş., & Durău, C. C. (2022). Environmental, Social and Governance Credentials of Agricultural Companies—The Interplay with Company Size. *Resources*, 11(3), 30. Doi: 10.3390/resources11030030
- Das, A. (2023). Predictive value of supply chain sustainability initiatives for ESG performance: a study of large multinationals. *Multinational Business Review*. Doi: 10.1108/MBR-09-2022-0149
- Diaye, M. A., Ho, S. H., & Oueghlissi, R. (2022). ESG performance and economic growth: a panel co-integration analysis. *Empirica*, 49(1), 99-122. Doi: 10.1007/s10663-021-09508-7
- Dicuonzo, G., Donofrio, F., Iannuzzi, A. P., & Dell'Atti, V. (2022). The integration of sustainability in corporate governance systems: an innovative framework applied to the European systematically important banks. *International Journal of Disclosure and Governance*, 19(3), 249-263. Doi: 10.1057/s41310-021-00140-2
- Dong, R., Shao, C., Xin, S., & Lu, Z. (2023). A Sustainable Development Evaluation Framework for Chinese Electricity Enterprises Based on SDG and ESG Coupling. *Sustainability*, 15(11), 8960. Doi: 10.3390/su15118960
- Douglas, E., Van Holt, T., & Whelan, T. (2017). Responsible investing: Guide to ESG data providers and relevant trends. *Journal of Environmental Investing*, 8(1), 91-114. Access: https://www.stern.nyu.edu/sites/default/files/assets/documents/ESG%20Data%20Providers_JEI_September%202017.pdf. Available in: 03 de agosto de 2023.
- Dreyer, J. K., Moreira, M., Smith, W. T., & Sharma, V. (2023). Do environmental, social and governance practices affect portfolio returns? Evidence from the US stock market from 2002 to 2020. *Review of Accounting and Finance*, 22(1), 37-61. Doi: 10.1108/RAF-02-2022-0046
- Edmans, A., & Kacperczyk, M. (2022). Sustainable finance. *Review of Finance*, 26(6), 1309-1313. Doi: 10.1093/rof/rfac069
- Efimova, O. V., Volkov, M. A., & Koroleva, D. A. (2021). The impact of ESG factors on asset returns: Empirical research. *Finance: theory and practice*, 25(4), 82-97. Doi: 10.26794/2587-5671-2021-25-4-82-97
- Escrig-Olmedo, E., Rivera-Lirio, J. M., Muñoz-Torres, M. J., & Fernández-Izquierdo, M. Á. (2017). Integrating multiple ESG investors' preferences into sustainable investment: A fuzzy multicriteria methodological approach. *Journal of cleaner production*, 162, 1334-1345. Doi: 10.1016/j.jclepro.2017.06.143
- Espahbodi, L., Espahbodi, R., Juma, N., & Westbrook, A. (2019). Sustainability priorities, corporate strategy, and investor behavior. *Review of financial economics*, 37(1), 149-167. Doi: 10.1002/rfe.1052
- Fan, J. H., & Michalski, L. (2020). Sustainable factor investing: Where doing well meets doing good. *International Review of Economics & Finance*, 70, 230-256. Doi: 10.1016/j.iref.2020.07.013
- Favato, K. J., Neumann, M., Sanches, S. L. R., Branco, M. C., & Nogueira, D. R. (2021). Integrated thinking and reporting process: sensemaking of internal actors in the case of Itaú Unibanco. *Journal of Risk and Financial Management*, 14(6), 245. Doi: 10.3390/jrfm14060245
- Friede, G. (2019). Why don't we see more action? A metasynthesis of the investor impediments to integrate environmental, social, and governance factors. *Business Strategy and the Environment*, 28(6), 1260-1282. Doi: 10.1002/bse.2346
- Francis, J., Chen, J. H., & Lee, M. Y. (2019). Fractional Integration in Corporate Social Responsibility Indices: A FIGARCH and HYGARCH Approach. *Asian Economic and Financial Review*, 9(7), 836-850. Doi: 10.18488/journal.aefr.2019.97.836.850
- Fritz, T. M., & von Schnurbein, G. (2019). Beyond socially responsible investing: Effects of mission-driven portfolio selection. *Sustainability*, 11(23), 6812. Doi: 10.3390/su11236812
- Galletta, S., & Mazzù, S. (2023). ESG controversies and bank risk taking. *Business Strategy and the Environment*, 32(1), 274-288. Doi: 10.1002/bse.3129
- Gärling, T., & Jansson, M. (2021). Sustainable investment: Consequences for psychological well-being. *Sustainability*, 13(16), 9256. Doi: 10.3390/su13169256
- Garzon Jimenez, R., & Zorio-Grima, A. (2021). Sustainability engagement in Latin America firms and cost of equity. *Academia Revista Latinoamericana de Administración*, 34(2), 224-243. Doi: 10.1108/ARLA-05-2020-0117
- Gebhardt, M., Thun, T. W., Seefloth, M., & Zülch, H. (2023). Managing sustainability—Does the integration of environmental, social and governance key performance indicators in the internal management systems contribute to companies' environmental, social and governance performance? *Business Strategy and the Environment*, 32(4), 2175-2192. Doi: 10.1002/bse.3242
- Giese, G., Lee, L. E., Melas, D., Nagy, Z., & Nishikawa, L. (2019). Foundations of ESG investing: How ESG affects equity valuation, risk, and performance. *The Journal of Portfolio Management*, 45(5), 69-83. Doi: 10.3905/jpm.2019.45.5.069
- Giese, G., Lee, L. E., Melas, D., Nagy, Z., & Nishikawa, L. (2019). Foundations of ESG investing: How ESG affects equity valuation, risk, and performance. *The Journal of Portfolio Management*, 45(5), 69-83. Doi: 10.3905/jpm.2019.45.5.069
- Gu, Y., Dai, J., & Vasarhelyi, M. A. (2023). Audit 4.0-based ESG assurance: An example of using satellite images on GHG emissions. *International Journal of Accounting Information Systems*, 50, 100625. Doi: 10.1016/j.accinf.2023.100625
- Gumerova, M. F., & Rizvanovab, I. A. (2023). Credit Risks of Russian Commercial banks: New Approaches to Management. *Finance: Theory and Practice*, 64. Doi: 10.26794/2587-5671-2023-27-2-64-75

- Harasheh, M., & Provasi, R. (2023). A need for assurance: Do internal control systems integrate environmental, social, and governance factors?. *Corporate Social Responsibility and Environmental Management*, 30(1), 384-401. Doi: 10.1002/csr.2361
- Harymawan, I., Nasih, M., Agustia, D., Putra, F. K. G., & Djajadikerta, H. G. (2022). Investment efficiency and environmental, social, and governance reporting: Perspective from corporate integration management. *Corporate Social Responsibility and Environmental Management*, 29(5), 1186-1202. Doi: 10.1002/csr.2263
- Hassan, M. K., Chiaramonte, L., Dreassi, A., Paltrinieri, A., & Piserà, S. (2022). The religious fringe of Corporate Social Responsibility. *International Review of Economics & Finance*, 80, 243-265. Doi: 10.1016/j.iref.2022.02.003
- Helfaya, A., Morris, R., & Aboud, A. (2023). Investigating the Factors That Determine the ESG Disclosure Practices in Europe. *Sustainability*, 15(6), 5508. Doi: 10.3390/su15065508
- Hofmann, B. (2022). Mainstreaming earth system governance into the UN decade of ocean science for sustainable development. *Earth System Governance*, 12, 100139. Doi: 10.1016/j.esg.2022.100139
- Hoang, K., Tran, L.P., Vu, V.T. and Vu, M.D. (2022), "The dark and bright sides of policy uncertainty: do too many cooks spoil the broth?", *Journal of Financial Economic Policy*, Vol. 14 No. 1, pp. 56-71. <https://doi.org/10.1108/JFEP-06-2020-0128>
- Ivascu, L., Domil, A., Sarfraz, M., Bogdan, O., Burca, V., & Pavel, C. (2022). New insights into corporate sustainability, environmental management and corporate financial performance in European Union: an application of VAR and Granger causality approach. *Environmental Science and Pollution Research*, 29(55), 82827-82843. Doi: 10.1007/s11356-022-21642-8
- In, S. Y., Rook, D., & Monk, A. (2019). Integrating alternative data (also known as ESG data) in investment decision making. *Global Economic Review*, 48(3), 237-260. Doi: 10.1080/1226508X.2019.1643059
- Jesus, I. R. D. de, & Nascimento, P. P. (2021). ESG strategies to deal with COVID-19 in a Brazilian public research company. *Brazilian Journal of Operations & Production Management*, 18(2), 1–14. <https://doi.org/10.14488/BJOPM.2021.028>
- Jin, I. (2022). Systematic ESG risk and decision criteria for optimal portfolio selection. *The Journal of Portfolio Management*, 48(10), 206-225. Doi: 10.3905/jpm.2022.1.344
- Jin, M., & Kim, B. (2022). The effects of ESG activity recognition of corporate employees on job performance: The case of South Korea. *Journal of Risk and Financial Management*, 15(7), 316. Doi: 10.3390/jrfm15070316
- Jonsdottir, B., Sigurjonsson, T. O., Johannsdottir, L., & Wendt, S. (2022). Barriers to using ESG data for investment decisions. *Sustainability*, 14(9), 5157. Doi: 10.3390/su14095157
- Kim, S., & Li, Z. (2021). Understanding the impact of ESG practices in corporate finance. *Sustainability*, 13(7), 3746. Doi: 10.3390/su13073746
- Kitchenham, B., & Charters, S. (2007) Guidelines for Performing Systematic Literature Reviews in Software Engineering, Technical Report EBSE 2007-001, Keele University and Durham University Joint Report. Parsif.al. About Parsifal - Learn more about the project and our goals. Access: <https://parsif.al>. Available in: 03 de agosto de 2023.
- Komarnicka, A., & Komarnicki, M. (2022). Challenges in the EU banking sector as exemplified by Poland in view of legislative changes related to climate crisis prevention. *Energies*, 15(3), 699. Doi: 10.3390/en15030699
- Kwon, H. G., & Shin, H. (2022). A Study on the Relationship between ESG Performance Information and Value-Relevance: Focusing on Travel & Tourism Industry in Korea. *Journal of Global Business and trade*, 18(6), 79-96. Doi: 10.20294/jgbt.2022.18.6.79
- Lee, D. D., Fan, J. H., & Wong, V. S. (2021). No more excuses! Performance of ESG-integrated portfolios in Australia. *Accounting & Finance*, 61, 2407-2450. Doi: 10.1111/acfi.12670
- Ielasi, F., Ceccherini, P., & Zito, P. (2020). Integrating ESG analysis into smart beta strategies. *Sustainability*, 12(22), 9351. Doi: 10.3390/su12229351
- Lim, W. M., Ciasullo, M. V., Douglas, A., & Kumar, S. (2022). Environmental social governance (ESG) and total quality management (TQM): a multi-study meta-systematic review. *Total Quality Management & Business Excellence*, 1-23. Doi: 10.1080/14783363.2022.2048952
- Lin, A. J., Chang, H. Y., & Hung, B. (2022). Identifying key financial, environmental, social, governance (ESG), bond, and COVID-19 factors affecting global shipping companies—A hybrid multiple-criteria decision-making method. *Sustainability*, 14(9), 5148. Doi: 10.3390/su14095148
- Lokuwaduge, C. S. D. S., & Heenetigala, K. (2017). Integrating environmental, social and governance (ESG) disclosure for a sustainable development: An Australian study. *Business Strategy and the Environment*, 26(4), 438-450. Doi: 10.1002/bse.1927
- Madden, B. J. (2023). Bet on innovation, not Environmental, Social and Governance metrics, to lead the Net Zero transition. *Systems Research and Behavioral Science*. Doi: 10.1002/sres.2915
- Maniora, J. (2017). Is integrated reporting really the superior mechanism for the integration of ethics into the core business model? An empirical analysis. *Journal of business ethics*, 140, 755-786. Doi: 10.1007/s10551-015-2874-z
- Manocha, P., & Srari, J. S. (2020). Exploring environmental supply chain innovation in M&A. *Sustainability*, 12(23), 10105. Doi: 10.3390/su122310105
- Medina, G., & Thomé, K. (2021). Transparency in global agribusiness: transforming Brazil's soybean supply chain based on companies' accountability. *Logistics*, 5(3), 58. Doi: 10.3390/logistics5030058

- Meng, X., & Shaikh, G. M. (2023). Evaluating Environmental, Social, and Governance Criteria and Green Finance Investment Strategies Using Fuzzy AHP and Fuzzy WASPAS. *Sustainability*, 15(8), 6786. Doi: 10.3390/su15086786
- Moikwathai, K., Yasseen, Y., & Omarjee, I. (2019). ESG reporting and the institutional shareholder base: a quantitative study of listed companies on the JSE. *Southern African Journal of Accountability and Auditing Research*, 21(1), 31-46. Doi: 10520/EJC-197ec192c0
- Moss, A., Naughton, J. P., & Wang, C. (2023). The Irrelevance of Environmental, Social, and Governance Disclosure to Retail Investors. *Management Science*. Doi: 10.1287/mnsc.2023.4822
- Nielsen, K. P., & Noergaard, R. W. (2011). CSR and mainstream investing: a new match?—an analysis of the existing ESG integration methods in theory and practice and the way forward. *Journal of Sustainable Finance & Investment*, 1(3-4), 209-221. Doi: 10.1080/20430795.2012.655889
- Nitani, M., Carriere, B., & Bleackley, A. (2015). Recognizing corporate citizenship: market reactions. *Journal of Sustainable Finance & Investment*, 5(1-2), 85-102. Doi: 10.1080/20430795.2015.1054775
- Norang, H., Store-Valen, M., Kvale, N., & Temeljotov-Salaj, A. (2023). Norwegian stakeholder's attitudes towards EU taxonomy. *Facilities*, 41(5/6), 407-433. Doi: 10.1108/F-03-2022-0051
- Park, S. R., & Oh, K. S. (2022). Integration of ESG information into individual investors' corporate investment decisions: Utilizing the UTAUT framework. *Frontiers in Psychology*, 13, 899480. Doi: 10.3389/fpsyg.2022.899480
- Parfitt, C. (2020). ESG integration treats ethics as risk, but whose ethics and whose risk? Responsible investment in the context of precarity and risk-shifting. *Critical sociology*, 46(4-5), 573-587. Doi: 10.1177/0896920519868794
- Pascoal, F. B., Juwana, H., Karuniasa, M., & Djokokusumo, H. H. (2023). Sovereign ESG Integration: A Bibliometric and Systematic Literature Review. *Studies in Business and Economics*, 18(1), 231-260. Doi: 10.2478/sbe-2023-0013
- Pishchalkina, I., Pishchalkin, D., & Suloeva, S. (2022). Research of the Efficiency of Mining and Metallurgical Enterprises Based on the Environmental, Social, and Governance Risk Rating in the Context of Digital Transformation. *International Journal of Technology*, 13(7). Doi: 10.14716/ijtech.v13i7.6181
- Principale, S., & Pizzi, S. (2023). The determinants of TCFD reporting: A focus on the Italian context. *Administrative Sciences*, 13(2), 61. Doi: 10.3390/admsci13020061
- Raman, N., Bang, G., & Nourbakhsh, A. (2020). Mapping ESG trends by distant supervision of neural language models. *Machine Learning and Knowledge Extraction*, 2(4), 453-468. Doi: 10.3390/make2040025
- Ramani, S., Henne, D., Kotsopoulos, D., Dickson, B., & Dickson, C. (2023). A Comparative Analysis of University Investment Policies and Procedures Related to Responsible Investing. *Higher Education Policy*, 1-23. Doi: 10.1057/s41307-023-00306-3
- Rehman, R. U., Abidin, M. Z. U., Ali, R., Nor, S. M., Naseem, M. A., Hasan, M., & Ahmad, M. I. (2021). The integration of conventional equity indices with environmental, social, and governance indices: evidence from emerging economies. *Sustainability*, 13(2), 676. Doi: 10.3390/su13020676
- Robinson, E., Parker, C., Carey, R., Foerster, A., Blake, M. R., & Sacks, G. (2022). Integrating nutrition and obesity prevention considerations into institutional investment decisions regarding food companies: Australian investment sector perspectives. *Globalization and Health*, 18(1), 93. Doi: 10.1186/s12992-022-00885-7
- Ronalter, L. M., Bernardo, M., & Romaní, J. M. (2022). Quality and environmental management systems as business tools to enhance ESG performance: a cross-regional empirical study. *Environment, Development and Sustainability*, 1-43. Doi: 10.1007/s10668-022-02425-0
- Ronalter, L. M., Poltronieri, C. F., & Gerolamo, M. C. (2023). ISO management system standards in the light of corporate sustainability: a bibliometric analysis. *The TQM Journal*, 35(9), 256-298. Doi: 10.1108/TQM-09-2022-0279
- Sahoo, S., & Kumar, S. (2022). Integration and volatility spillover among environmental, social and governance indices: Evidence from BRICS countries. *Global Business Review*, 23(6), 1280-1298. Doi: 10.1177/09721509221114699
- Sarkar, S., Moolearambil Sukumaran Nair, M., & Datta, A. Role of Environmental, Social, and Governance in achieving the UN Sustainable Development Goals: A special focus on India. *Environmental Progress & Sustainable Energy*, e14204. Doi: 10.1002/ep.14204
- Sciarelli, M., Cosimato, S., Landi, G., & Iandolo, F. (2021). Socially responsible investment strategies for the transition towards sustainable development: The importance of integrating and communicating ESG. *The TQM Journal*, 33(7), 39-56. Doi: 10.1108/TQM-08-2020-0180
- Shamsuddoha, M., & Woodside, A. G. (2022). Achieving radical process innovations by applying technology-mindset transformations via second-order system-dynamics engineering. *Journal of Business Research*, 147, 37-48. Doi: 10.1016/j.jbusres.2022.04.006
- Shea, M. I., & Hutchin, J. W. (2013). The insurance industry must champion sustainability. *Thunderbird International Business Review*, 55(6), 659-672. Doi: 10.1002/tie.21582
- Sherwood, M. W., & Pollard, J. L. (2018). The risk-adjusted return potential of integrating ESG strategies into emerging market equities. *Journal of Sustainable Finance & Investment*, 8(1), 26-44. Doi: 10.1080/20430795.2017.1331118
- Steuer, R. E., & Utz, S. (2023). Non-contour efficient fronts for identifying most preferred portfolios in sustainability investing. *European Journal of Operational Research*, 306(2), 742-753. Doi: 10.1016/j.ejor.2022.08.007
- Syed, A. M. (2017). Environment, social, and governance (ESG) criteria and preference of managers. *Cogent Business & Management*, 4(1), 1340820. Doi: 10.1080/23311975.2017.1340820
- Tanaka, H., & Tanaka, C. Sustainable investment strategies and a theoretical approach of multi-stakeholder communities, *Green Finance*, 4 (2022), 329–346. Doi: 10.3934/GF.2022016

- Teixeira Dias, F., de Aguiar Dutra, A. R., Vieira Cubas, A. L., Ferreira Henckmaier, M. F., Courval, M., & de Andrade Guerra, J. B. S. O. (2023). Sustainable development with environmental, social and governance: Strategies for urban sustainability. *Sustainable Development*, 31(1), 528-539. Doi: 10.1002/sd.2407
- Teng, X., Ge, Y., Wu, K. S., Chang, B. G., Kuo, L., & Zhang, X. (2022). Too little or too much? Exploring the inverted U-shaped nexus between voluntary environmental, social and governance and corporate financial performance. *Frontiers in Environmental Science*, 10, 969721. Doi: 10.3389/fenvs.2022.969721
- Uyar, A., Abdelqader, M., & Kuzey, C. (2023). Liquidity and CSR: A chicken and egg story. *Society and Business Review*, 18(1), 124-151. Doi: 10.1108/SBR-01-2022-0032
- Väänänen, N. (2021). Two different paths to sustainability? A comparison of a Finnish and a Swedish public pension reserve fund. *European Journal of Social Security*, 23(3), 298-317. Doi: 10.1177/13882627211036473
- Van Duuren, E., Plantinga, A., & Scholtens, B. (2016). ESG integration and the investment management process: Fundamental investing reinvented. *Journal of Business Ethics*, 138, 525-533. Doi: 10.1007/s10551-015-2610-8
- Vărzaru, A. A., Bocean, C. G., & Nicolescu, M. M. (2021). Rethinking corporate responsibility and sustainability in light of economic performance. *Sustainability*, 13(5), 2660. Doi: 10.3390/su13052660
- Wang, X., & Jin, S. (2023). Environmental, Social, and Governance Performance and Corporate Sustainable Development in China. *J. Glob. Bus. Trade*, 19(1), 91-107. Doi: 10.20294/jgbt.2023.19.1.91
- Whitelock, V. G. (2019). Multidimensional environmental social governance sustainability framework: Integration, using a purchasing, operations, and supply chain management context. *Sustainable Development*, 27(5), 923-931. Doi: 10.1002/sd.1951
- Wu, L., Hu, K., Lyulyov, O., Pimonenko, T., & Hamid, I. (2022). The Impact of Government Subsidies on Technological Innovation in Agribusiness: The Case for China. *Sustainability*, 14(21), 14003. Doi: 10.3390/su142114003
- Zaccone, M. C., & Pedrini, M. (2020). ESG factor integration into private equity. *Sustainability*, 12(14), 5725. Doi: 10.3390/su12145725
- Zerbib, O. D. (2022). A sustainable capital asset pricing model (S-CAPM): Evidence from environmental integration and sin stock exclusion. *Review of Finance*, 26(6), 1345-1388. Doi: 10.1093/rof/rfac045
- Zumente, I., Bistрова, J., & Lāce, N. (2022). Environmental, Social, and Governance Policy Integration and Implementation from the Perspective of Corporations. *Intellectual Economics*, 16(1), 41-57. Doi: 10.13165/IE-22-16-1-03